

FLOOR PLANS CAPACITY CHARTS

THE WESTIN

CHICAGO
RIVER NORTH



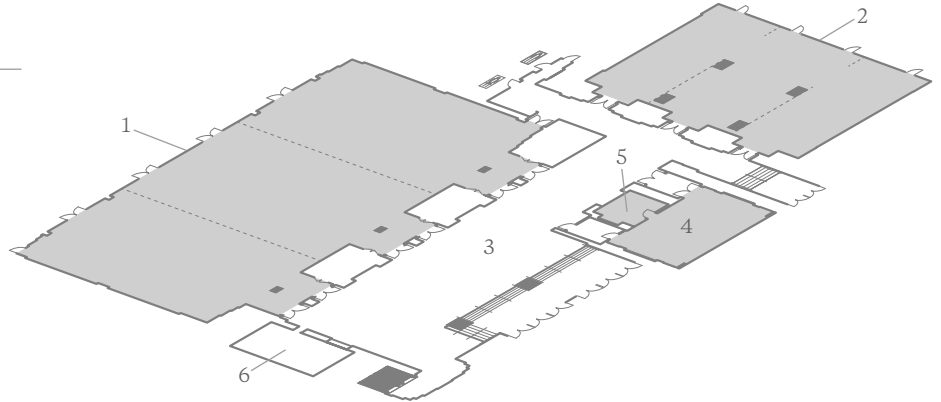
MEETING SPACE OVERVIEW

320 North Dearborn Street
Chicago, Illinois 60654
T 312.744.1900 F 312.527.2650
E westinchicago@starwoodhotels.com
westinchicago.com

THE WESTIN
CHICAGO
RIVER NORTH

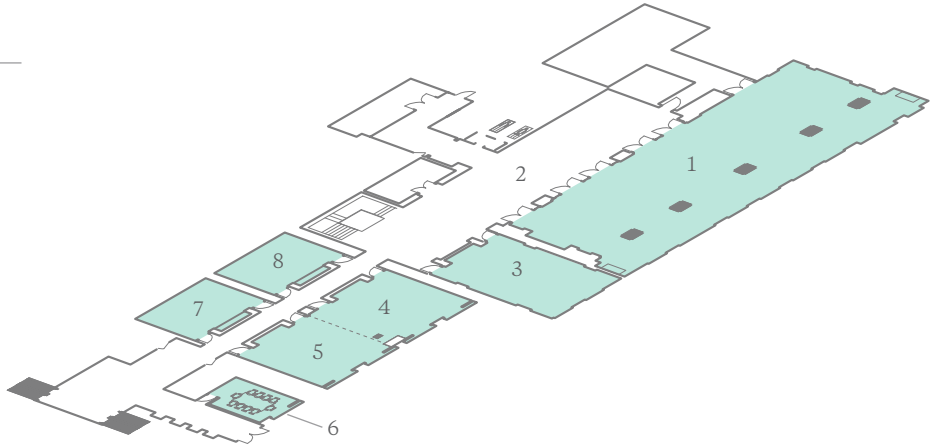
RIVER LEVEL TWO

1. GRAND BALLROOM
2. PROMENADE BALLROOM
3. GRAND COURT
4. EXECUTIVE BOARDROOM
5. CAUCUS ROOM
6. COAT CHECK



RIVER LEVEL ONE

1. ASTOR BALLROOM
2. ASTOR COURT
3. JACKSON PARK
4. GRANT PARK
5. LINCOLN PARK
6. BURNHAM PARK
7. WASHINGTON PARK
8. ROGERS PARK



ROOMS AT A GLANCE

TOTAL GUEST ROOMS	429
TOTAL MEETING ROOMS	17
LARGEST MEETING ROOM CAPACITY	1,000
LARGEST MEETING ROOM SIZE	780 m ² / 8,400 ft ²

Additional spaces for meetings and events, not displayed here, may also be available. Contact your hotel representative for more information.

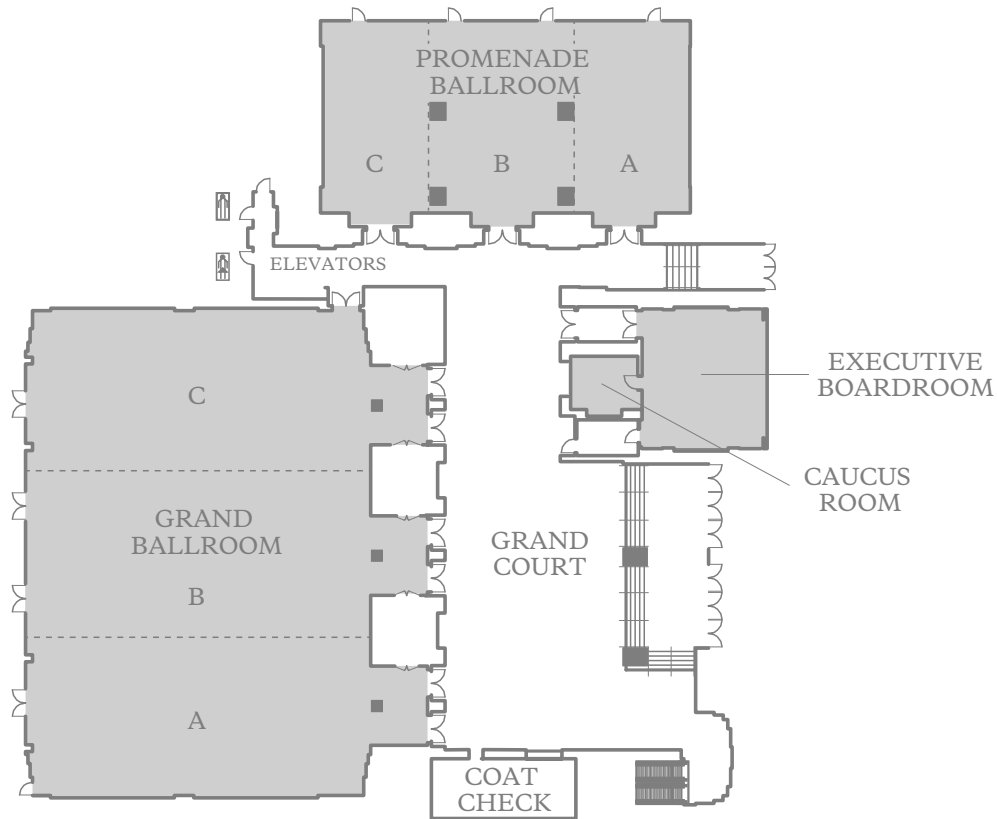
This document contains approximate measurements and square footage that are for illustrative purposes only. We cannot guarantee the floor plan accuracy or completeness, therefore encourage you to review the space to make sure it is suitable for your event.

MEETING SPACE RIVER LEVEL TWO

320 North Dearborn Street
Chicago, Illinois 60654
T 312.744.1900 F 312.527.2650
E westinchicago@starwoodhotels.com
westinchicago.com

THE WESTIN

CHICAGO
RIVER NORTH



	DIMENSIONS	AREA (SQ. FT.)	MAX CEILING HEIGHT	THEATER	CLASSROOM	BANQUET	CONFERENCE	U-SHAPE	HOLLOW SQ.	RECEPTION
■ CAUCUS ROOM	15' X 13'	184	8'	—	—	—	6	—	—	19
■ EXECUTIVE BOARDROOM	40' X 32'	513	9.5'	50	45	40	24	27	30	54
■ GRAND BALLROOM	88' X 107'	8,708	17.1'	900	468	700	—	—	—	916
■ GRAND BALLROOM A	88' X 35'	2,861	17.1'	272	156	180	54	63	72	301
■ GRAND BALLROOM A - B	88' X 72'	5,845	17.1'	555	312	360	—	—	—	615
■ GRAND BALLROOM B	88' X 37'	2,983	17.1'	272	156	180	54	63	72	314
■ GRAND BALLROOM B - C	88' X 72'	5,847	17.1'	555	312	360	—	—	—	615
■ GRAND BALLROOM C	88' X 35'	2,863	17.1'	272	156	180	54	63	72	301
■ GRAND COURT	113' X 135'	6,195	10.8'	—	—	—	—	—	—	621
■ PROMENADE BALLROOM	45' X 81'	3,479	9.7'	203	162	280	32	—	—	366
■ PROMENADE A	45' X 24'	1,023	9.7'	80	48	60	36	36	39	107
■ PROMENADE A - B	45' X 56'	2,365	9.7'	168	126	160	—	—	—	248
■ PROMENADE B	45' X 32'	1,342	9.7'	80	63	80	30	30	36	141
■ PROMENADE B - C	45' X 58'	2,457	9.7'	168	126	160	—	—	—	258
■ PROMENADE C	45' X 26'	1,115	9.7'	80	63	80	36	36	39	117

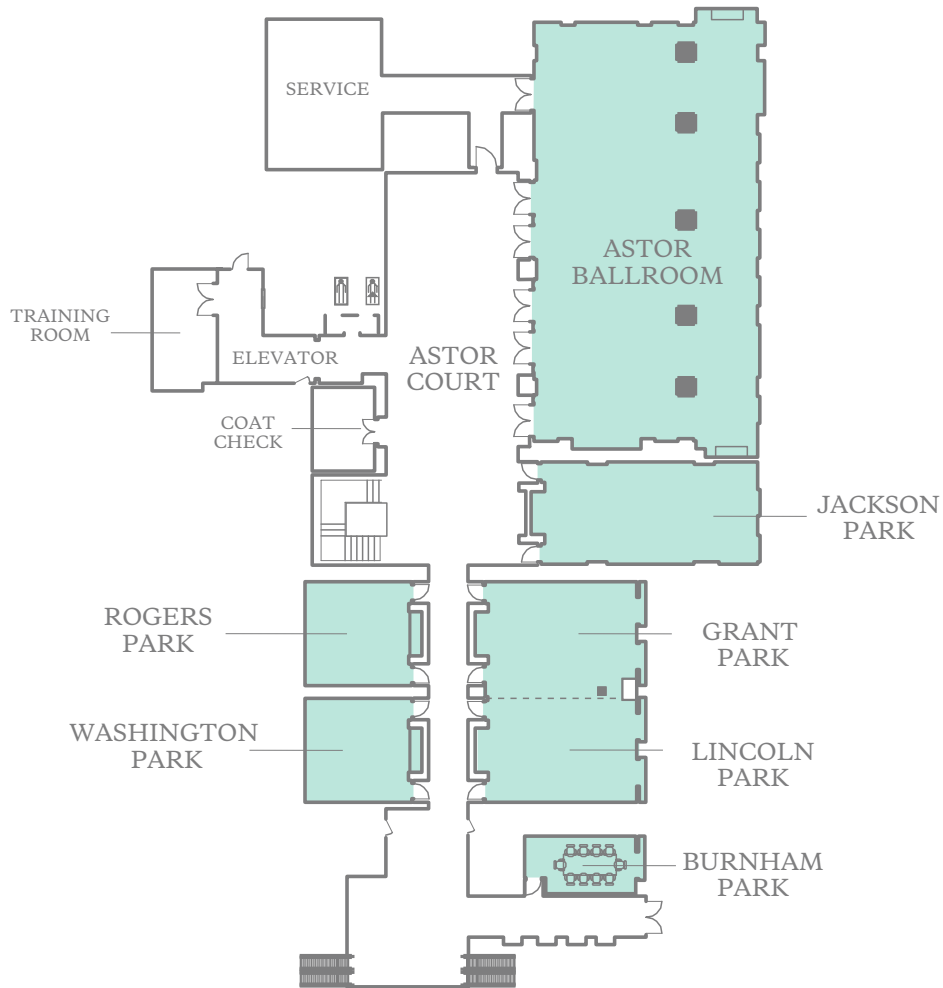
This document contains approximate measurements and square footage that are for illustrative purposes only. We cannot guarantee the floor plan accuracy or completeness, therefore encourage you to review the space to make sure it is suitable for your event.

MEETING SPACE RIVER LEVEL ONE

320 North Dearborn Street
Chicago, Illinois 60654
T 312.744.1900 F 312.527.2650
E westinchicago@starwoodhotels.com
westinchicago.com

THE WESTIN

CHICAGO
RIVER NORTH



	DIMENSIONS	AREA (SQ. FT.)	MAX CEILING HEIGHT	THEATER	CLASSROOM	BANQUET	CONFERENCE	U-SHAPE	HOLLOW SQ.	RECEPTION
■ ASTOR BALLROOM	44' X 85'	3,343	12.7'	130	108	210	48	55	62	351
■ ASTOR COURT	43' X 74'	1,881	9.6'	—	—	—	—	—	—	197
■ BURNHAM PARK	11' X 23'	227	8'	—	—	—	10	—	—	23
■ GRANT & LINCOLN	32' X 42'	1,245	8.1'	100	48	50	36	36	40	131
■ GRANT	32' X 22'	662	8.1'	50	24	20	12	23	28	69
■ LINCOLN	32' X 20'	593	8.1'	50	24	20	24	23	28	62
■ JACKSON PARK	43' X 19'	798	8.9'	81	42	30	24	34	38	84
■ ROGERS PARK	22' X 20'	408	8.1'	36	18	20	12	15	20	42
■ WASHINGTON PARK	22' X 20'	408	8.1'	36	18	10	12	15	20	42

This document contains approximate measurements and square footage that are for illustrative purposes only. We cannot guarantee the floor plan accuracy or completeness, therefore encourage you to review the space to make sure it is suitable for your event.



320 North Dearborn Street
Chicago, Illinois 60654
T 312.744.1900 F 312.527.2650
E westinchicago@starwoodhotels.com
westinchicago.com

THE WESTIN
CHICAGO
RIVER NORTH